



PRODUCT CATALOG

- HONEYWELL E-STOPS MOUNTING BRACKET
- PHOTO EYE CONTROL BRACKETS
- EMERGENCY STOPS
- MOUNTING BRACKETS
- CABLE & CABLE KITS
- REFLECTORS
- PULLEY SYSTEMS



Partners In Safety

Honeywell E-Stops Mounting Bracket



Mounting slots or tongue can be mounted facing in or facing out.

All hardware included.

Will work with all Honeywell Emergency Stop Units.

Product Numbers:

SLK-1W-LED

SLK-2W-LED



Emergency Stops



SLK-24V-2CCP (HONEYWELL 2CCP)

- Dual direction
- Improved design for LED and tension windows
- Updated design to easily and economically replace faceplate
- All options in one package size
- Rear conduit port
- Dual, left, or right actuation
- 24 V, 120 Vac, or 230 Vac LED
- E-stop and restart button



SLK-24V-1CPS (HONEYWELL 1CPS)

- IP67 sealing
- Smaller footprint than dual direction
- Extra contact and connector options
- Silver or gold plated contacts
- 24 V or 120 Vac LED
- E-stop
- 10-pin Brad Harrison connector



SLK-24V-2CPS (HONEYWELL 2CPS)

- Dual direction
- IP67 sealing
- Large and robust die-cast aluminum housing
- Dual, left, or right actuation
- 24 V or 120 Vac LED
- Restart button



SLK-1W (HONEYWELL 1CPSA1)

Single span cable pull with broken/slack cable detect, 1NO & 1NC

SLK-1W-2 (HONEYWELL 1CPSA2)

Single span with broken/slack cable detect, 2NO & 2NC

NOSLK-1W (HONEYWELL 1CPSA1-N)

Single span cable pull without broken/slack cable detect, 1NO & 1NC

Emergency Stops



SLK-1W-LED (HONEYWELL 1CPSA1B)

Single span emergency stop with broken/slack cable detect and LED, 120 VAC LED, 1NO & 1NC

SLK-1W-LED-2 (HONEYWELL 1CPSA2B)

Single span emergency stop switch with broken/slack cable detect and LED, 120 VAC LED, 2NO & 2NC

SLK-1W-LED-24VDC (HONEYWELL 1CPSA1A)

Single span cable pull with broken/slack cable detect, 24 VDC LED, 1NO & 1NC

SLK-1W-LED-24VDC-2 (HONEYWELL 1CPSA2A)

Single span cable pull with broken/slack cable detect, 24 VDC LED, 2NO & 2NC

NOSLK-1W-LED (HONEYWELL 1CPSA1B-N)

Single span cable pull without broken/slack cable detect and LED, 120 VAC LED, 1NO & 1NC



SLK-1W-M (HONEYWELL CLSB4B)

Momentary switch



SLK-2W (HONEYWELL 2CPSA1A1)

Dual span cable pull with broken/slack cable detect, 2NO & 2NC

NOSLK-2W (HONEYWELL 2CPSA1A4)

Dual span, no slack cable detect, 2NO & 2NC



SLK-2W-LED (HONEYWELL 2CPSA1A1B)

Dual span emergency stop with broken/slack cable detect and led, 120 VAC LED, 2NO & 2NC

SLK-2W-LED-24VDC (HONEYWELL 2CPSA1A1A)

Dual span cable pull with broken/slack cable detect, 24VDC led, 2NO & 2NC

NOSLK-2W-LED (HONEYWELL 2CPSA1A4)

Dual span cable pull, no slack cable detect with 120 VAC LED, 2NO & 2NC

Cable & Hardware Kits



ZZZZR7

Red Vinyl-Coated 7x7 Strand Galvanized Aircraft Cable

Bare Cable Diameter: 1/8" Coated Cable Diameter: 3/16" O.D.
Weight: 28.5 lbs. per 1000 ft
Minimum Break Strength: 1,700 lbs.

Cut to Length: 5000 ft Maximum Length
(Note: "ZZZZ" = Length of Cable in Feet)

SLK-R7-1 W

Single Span Cable Kit

Kit includes all hardware needed for installation:

- 50' red aircraft cable (yellow available),
- cable clamps,
- HD spring,
- turnbuckle,
- thimble,
- eye bolts & nuts

ZZZZY7

Yellow Available Vinyl-Coated 7x7 Strand Galvanized Aircraft Cable

Bare Cable Diameter: 1/8" Coated Cable Diameter: 3/16" O.D.
Weight: 28.5 lbs. per 1000 ft
Minimum Break Strength: 1,700 lbs.

Cut to Length: 5000 ft. Maximum Length
(Note: "ZZZZ" = Length of Cable in Feet)

SLK-R7-2W

DualSpan Cable Kit

Kit includes all hardware needed for installation:

- 2 x 50' red aircraft cable (yellow available),
- cable clamps,
- HD spring (2),
- turnbuckle (2),
- thimble (2),
- eye bolts & nuts

CIS-ATX-50-KIT

Hardware kit that includes a package of highly used conveyor automation components. The kit encompasses various components to simplify the sourcing process for high-volume hardware demand. Included are:

- 50' red cable (1),
- turnbuckles (2),
- thimbles (4),
- rope clamps (8),
- eye bolts (8)
- whiz nuts (16),
- flat washer (16)

CIS-ATX-70-KIT

Hardware kit that includes a package of highly used conveyor automation components. The kit encompasses various components to simplify the sourcing process for high-volume hardware demand. Included are:

- 70' red cable (1),
- turnbuckles (2),
- thimbles (4),
- rope clamps (8),
- eye bolts (8)
- whiz nuts (16),
- flat washer (16)

CIS-DIV-KIT-1

Hardware kit that includes a package of highly used conveyor automation components. The kit encompasses various components to simplify the sourcing process for high-volume hardware demand. Included are:

- 150' red cable (1),
- eye & eye turnbuckle (1),
- thimbles (2),
- rope clamps (4),
- eye bolts (15)
- quick connectors (2),
- spring (1)

CIS-DIV-KIT-2

Hardware kit that includes a package of highly used conveyor automation components. The kit encompasses various components to simplify the sourcing process for high-volume hardware demand. Included are:

- eye & eye turnbuckle (1),
- thimbles (2),
- rope clamps (4),
- eye bolts (15)
- quick connectors (2),
- spring (1)

Pulley Systems



2" Diameter Swivel Pulley

(Pulley-01)

Suitable For Use with 1/8" 7X7 or 7X19 Strand Galvanized Aircraft Cable

Supplied with 3/8" Diameter X 4" Long Turned Eyebolt, Hex Nuts and Pre-Assembled with 1/2" Hardware

2" Diameter Fixed Pulley

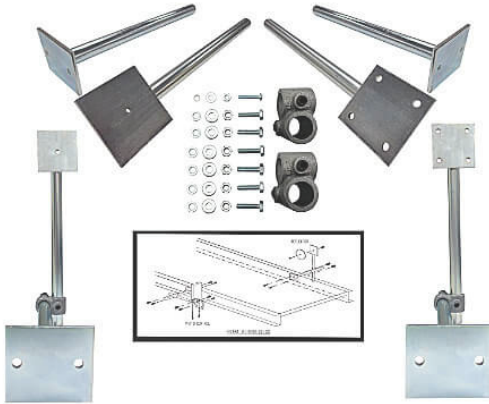
(Pulley-02)

Suitable For Use with 1/8" 7X7 or 7X19 Strand Galvanized Aircraft Cable

Pre-Mounted with #10-24 Hardware on a Zinc Plated, Right Angle Bracket (3/16" Thick)

Supplied with 3/8" Hardware for Mounting to Conveyor Side Channel

Photo Eye Control Brackets



PEBKT-21-000-21-00

5 & 5 Hole Photo Eye Control Bracket Assembly (Steel/Zinc)

Available in Safety Yellow and Safety Orange.

Material: 12" Long X 1/2" Schedule 40 Zinc Plated Pipe with 3"x3"x3/16" Zinc Plated C.R.S. Plate

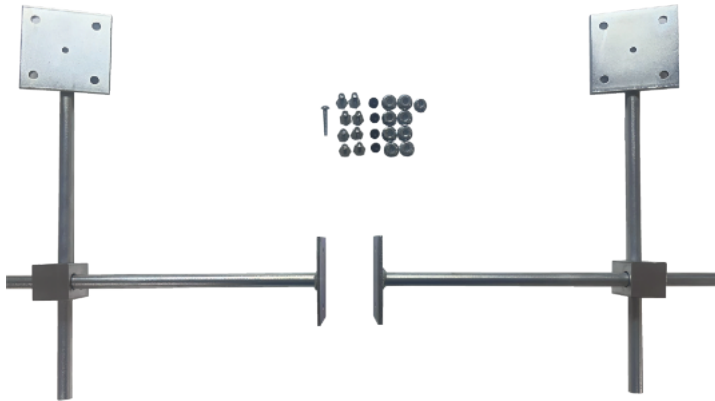
Allows for 12" Vertical or Horizontal Adjustment (Depending on Mounting Orientation)

Plate has 4 Mounting Holes (9/32" Dia.) on 2" Centers for Photo Control Attachment (Requires Angle or Swivel Type Adapter Bracket from Photo Control Manufacturer)

Plate Mounting Holes Allow for a Total of 4 Photo Control Mounting Orientations

Supplied with Zinc Plated 12" Long X 1/2" Schedule 40 Pipe and 2 Hole (9/32" Diameter) Standoff Mounting Plate, Heavy Duty 1/2" Pipe Cross Clamp and All Necessary Hardware for Mounting to Equipment

(Note: This Control Bracket Assembly May Be Used with Many Popular Photo Controls That Use the Universal 2" on Center Mounting Pattern)



PEBKT-22-000-22-00

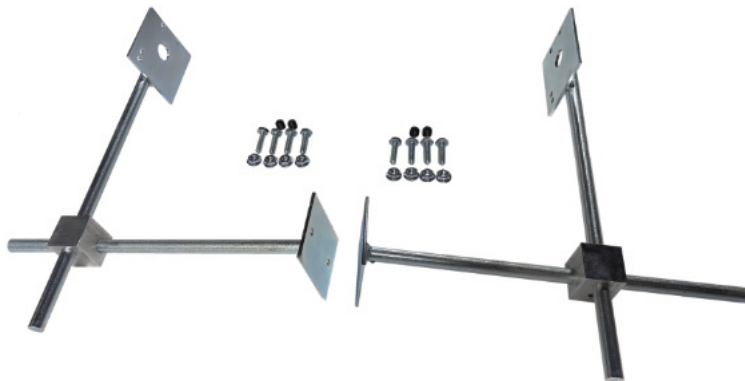
Standard 5 & 5 Hole Bracket Assembly With Ability To Adapt Any Hole Pattern (Steel/Zinc)

Material: 12" long x 1/4" solid carbon steel rod, zinc plate (or powder-coated) with 3"x3"x3/16" zinc plated CRS plate

Allows for 12" vertical or horizontal adjustment (depending on mounting orientation)

The standard plate has a 5 mounting holes (9/32" Dia.) on 2" centers for photo control attachment

Supplied with (2) 12" long rods connected with an aluminum pipe cross with individual set screws and necessary hardware for configuration



PEBKT-QC

Material: 12" long x 1/4" solid carbon steel rod, zinc plate (or powder-coated) with 3"x3"x3/16" zinc plated CRS plate with a .72 Diameter center hole

Allows for 12" vertical or horizontal adjustment (depending on mounting orientation)

Supplied with (2) 12" long rods connected with an aluminum pipe cross with individual set screws and necessary hardware for configuration.

Photo Eye Control Brackets



PEBKT-00-000-21-00

1 Hole Bracket Kit (Steel/Zinc)

Available in safety yellow and safety orange.

Material: 12" long x 1/4" solid carbon steel rod, zinc plate (or powder-coated) with 3"x3"x3/16" zinc plated CRS plate with a .72 Diameter center hole

Allows for 12" vertical or horizontal adjustment (depending on mounting orientation)

Supplied with (2) 12" long rods connected with an aluminum pipe cross with individual set screws and necessary hardware for configuration



PEBKT-21-000-00-00

4 Hole Bracket Kit (Steel/Zinc)

Available in safety yellow and safety orange

Material: 12" long x 1/4" solid carbon steel rod, zinc plate (or powder-coated) with 3"x3"x3/16" zinc plated CRS plate with a .72 Diameter center hole

Allows for 12" vertical or horizontal adjustment (depending on mounting orientation)

Supplied with (2) 12" long rods connected with an aluminum pipe cross with individual set screws and necessary hardware for configuration



PEBKT-00-000-22-00

Photo Control Bracket 3 Hole Kit

Reflectors sold separately

Mounting Brackets



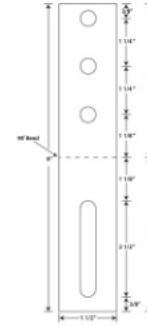
BKT-01

Small Bracket

Sold Separately

No Hardware Included

Multi-functional bracket used for various electrical component mounts



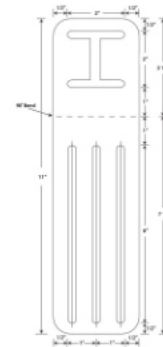
BKT-02

Large Bracket

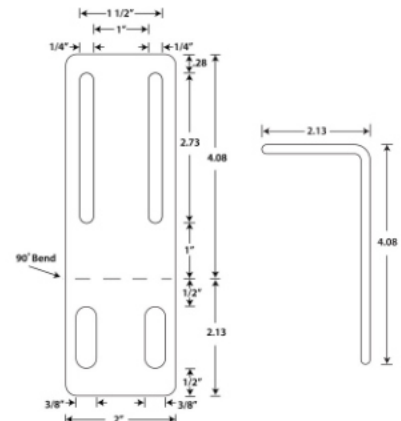
Sold in pairs only

All Hardware Included

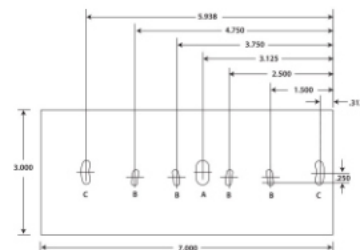
Multi-functional bracket used for various electrical component mounts



ATX-02

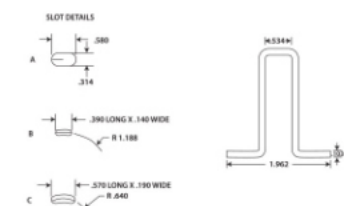


ATX-03



ATX-05

Complete Unit Combo



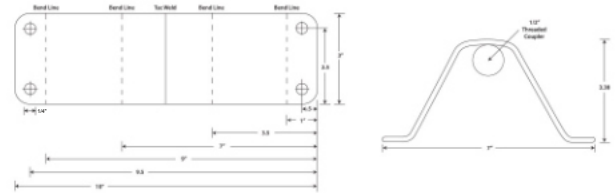
Mounting Brackets



CISBeacon

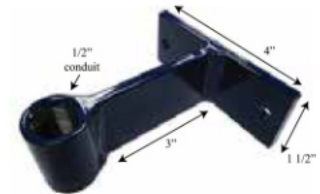
Beacon Bracket

Designed to offer a stronger base for your stack lights



PABeacon

Securely elevate your stack light over your equipment

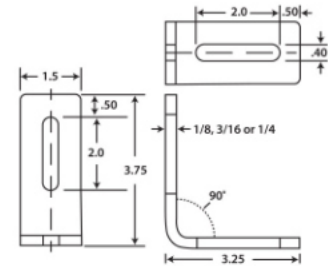


CIS Bead GB 3.75

Beaded Channel Bracket

Designed for 8" & 10" bead guide bolt hole patterns

| Part Number | Thickness |
|-------------------------|-----------|
| CIS 3.75 X 3.25 BEAD GB | 1/8" |
| CIS 3.75 X 3.25 BEAD GB | 3/16" |
| CIS 3.75 X 3.25 BEAD GB | 1/4" |

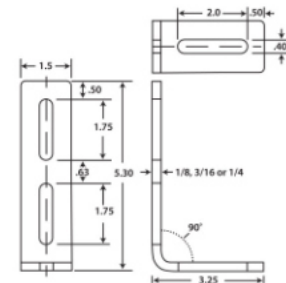


CIS Bead GB 5.30

Beaded Channel Bracket

Designed for 8" & 10" bead guide bolt hole patterns

| Part Number | Thickness |
|-------------------------|-----------|
| CIS 5.30 X 3.25 BEAD GB | 1/8" |
| CIS 5.30 X 3.25 BEAD GB | 3/16" |
| CIS 5.30 X 3.25 BEAD GB | 1/4" |

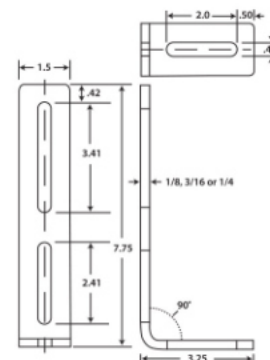


CIS Bead GB 7.75

Beaded Channel Bracket

Designed for 8" & 10" bead guide bolt hole patterns

| Part Number | Thickness |
|-------------------------|-----------|
| CIS 7.75 X 3.25 BEAD GB | 1/8" |
| CIS 7.75 X 3.25 BEAD GB | 3/16" |
| CIS 7.75 X 3.25 BEAD GB | 1/4" |

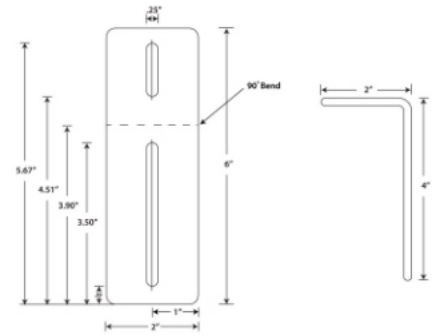


Mounting Brackets



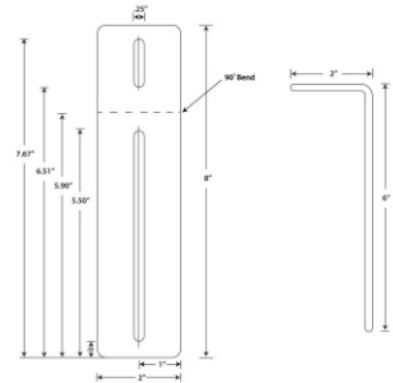
CIS-4

2" x 4" Conduit Bracket



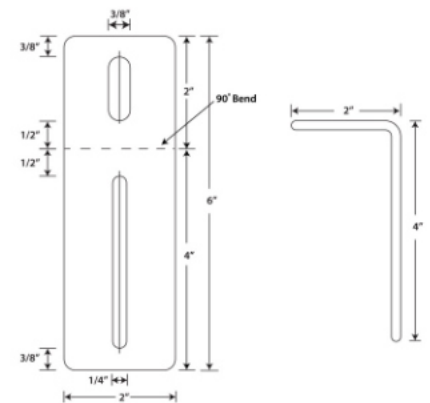
CIS-6

2" x 6" Conduit Bracket



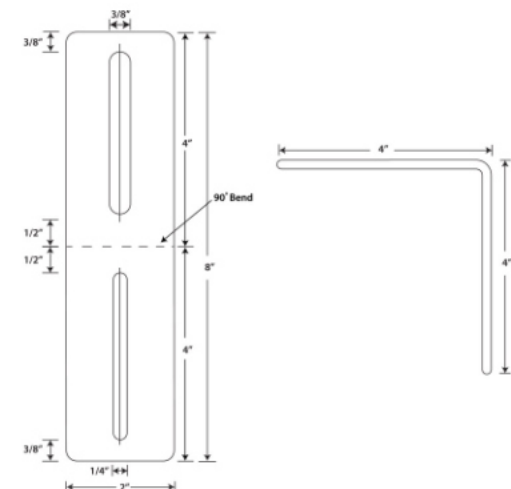
MAX-1

2" x 4" Conduit Bracket



MAX-1A

4" x 4" Conduit Bracket

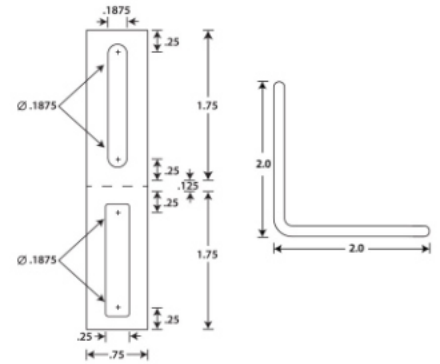


Mounting Brackets



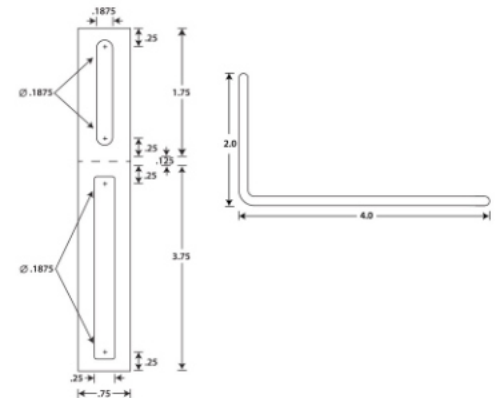
MCS-BKT-PEREF-2

Used for the Sick 1089835 Photo Electric Retro-Reflective Sensor



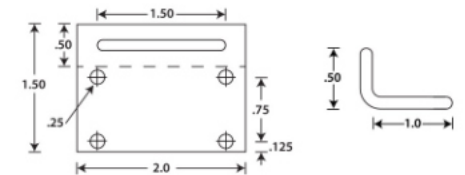
MCS-BKT-PE-REFL-4

Used for the Sick 1089835 Photo Electric Retro-Reflective Sensor



MCS-BKT-REFL-P250

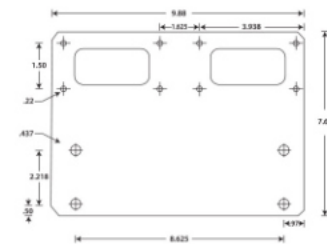
Used for the Sick P250 Reflector



CIS-MCS-AB

Dual Pull Cord Bracket

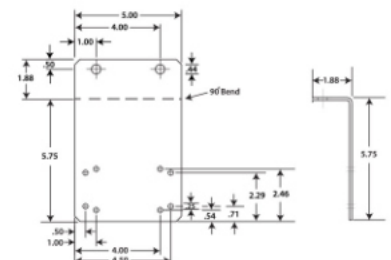
For lifeline 4 cable pull



KVK-01

Mounting bracket

Fits IDEM pull cord switches

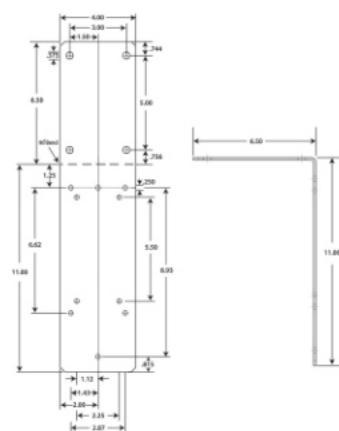


Mounting Brackets

**KVK-02**

Mounting Bracket

Compatible with Allen Bradley pow
flex series



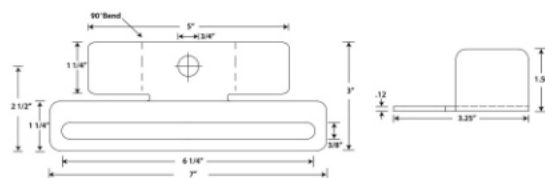
CISBH-01

Photo Eye Bracket



CISBH-02

Photo Eye Bracket



CISBH-03

Photo Eye Bracket



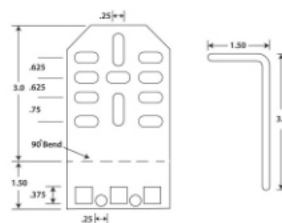
CISBH-04

Photo Eye Bracket



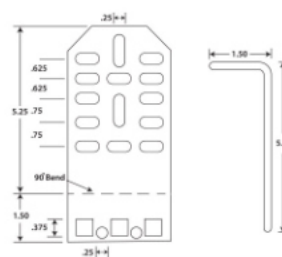
MAX2S

Max Bracket



MAX2M

Max Bracket

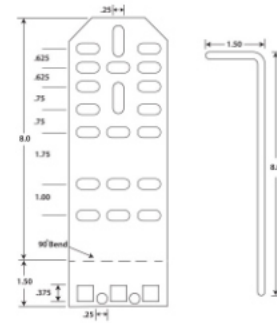


Mounting Brackets



MAX2L

Max Bracket

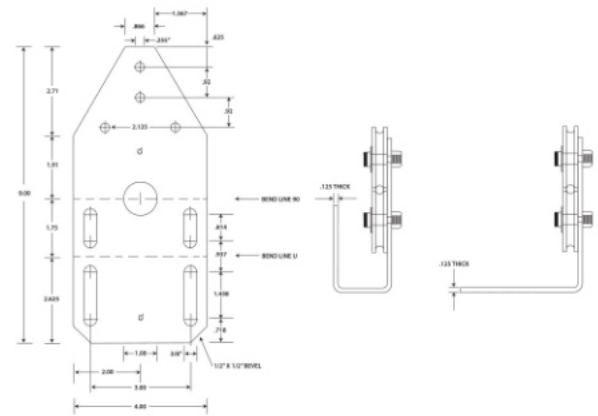


TRI-P-90

90 degree bend

Tri-Pulley Universal Bracket

Kit includes all hardware needed for installation

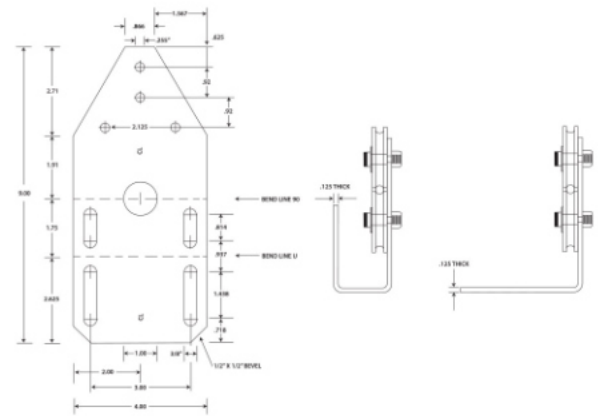


TRI-P-U

U shape

Tri-Pulley Universal Bracket

Kit includes all hardware needed for installation

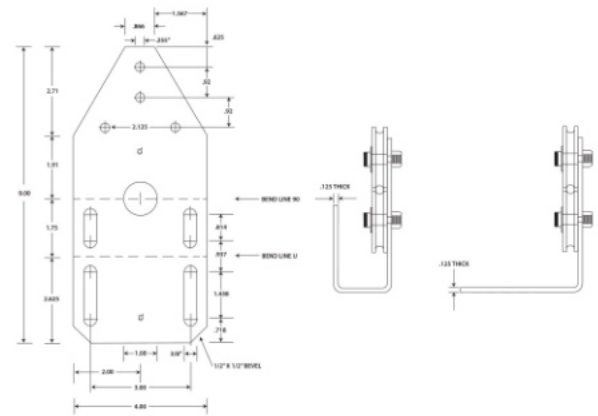


TRI-P-FLT

Flat

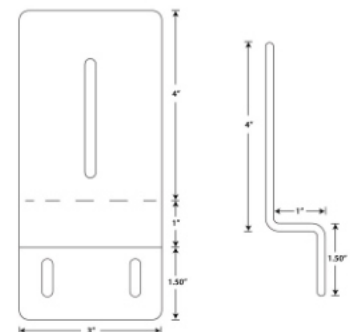
Tri-Pulley Universal Bracket

Kit includes all hardware needed for installation



CIS-ABU-RBKT

Universal Reflector Bracket



Mounting Brackets

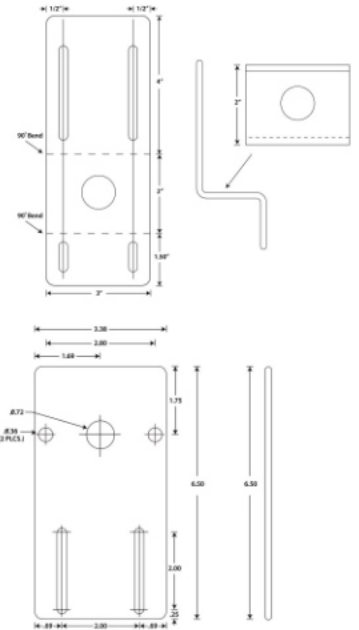


CIS-ABU-PBKT

Universal Photo Eye Bracket
Compatible with Allen Bradley
photo eyes

CIS-Universal Combo

Universal Reflector & Photo Eye
Bracket
Used for mounting Sick electronics



Reflectors



PEBKT-00-000-13

Plastic back 3.25" reflector

3-1/4" Diameter Corner Cube Retroreflector

Plastic Housed with 3/16" Diameter Hole for Screw Type Mounting

Suitable for Use with Polarized Photo Controls

PEBKT-00-000-23

Aluminum back 3.25" reflector

3-1/4" Diameter Corner Cube Retroreflector

Aluminum Housed with 3/16" Diameter Hole for Screw Type Mounting

Suitable for Use with Polarized Photo Controls

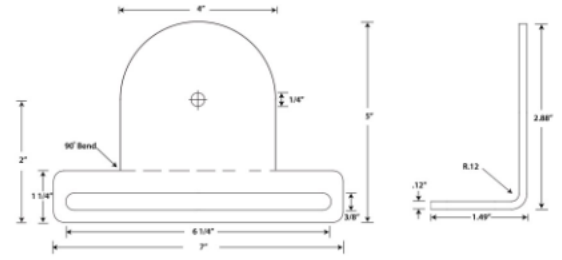
Reflectors



CISBH05
Reflector Bracket



CISBH06
Reflector Bracket





Creative Industrial Systems is committed to making your problem our solution. Time is money. When a project is on hold waiting for components, it is costing you and your customer money.

Our brackets and assemblies arrive with every piece needed to complete installation. Your team will never need to send someone to the local hardware store to search for missing pieces.

We pride ourselves on maintaining substantial inventory of all Honeywell cable pull switches, in-house manufactured bracketry, cable and hardware so we can ship most any order the same day and have it on site the next day if needed.

Our staff is knowledgeable and attentive to your needs, and always personally available to support you and your team in the field.

Count on Creative Industrial Systems to be not only your supplier but also your partner who is always there to keep you moving in the right direction.

Contact Us:

**2965 Pittsburgh Road
Perryopolis, PA 15473**

P: 724-736-2500

F: 724-736-8082

sales@creativeindustrialsystems.com

Warranty & Remedy

Honeywell warrants goods of its manufacture as being free of defective materials and faulty workmanship. Honeywell's standard product warranty applies unless agreed to otherwise by Honeywell in writing; please refer to your order acknowledgement or consult your local sales office for specific warranty details. If warranted goods are returned to Honeywell during the period of coverage, Honeywell will repair or replace, at its option, without charge those items it finds defective.

The foregoing is buyer's sole remedy and is in lieu of all warranties, expressed or implied, including those of merchantability and fitness for a particular purpose. In no event shall Honeywell be liable for consequential special, or indirect damages.

While we (Honeywell) provide application assistance personally, through our literature and the Honeywell website, it is up to the customer to determine the suitability of the product in the application. Specifications may change without notice. The information we supply is believed to be accurate and reliable as of this printing.

However, we assume no responsibility for its use.